

INSTALLATION INSTRUCTIONS AND USER GUIDE

**Gabarrón**



# G CONTROL HUB

WIRELESS RADIATOR CONTROL SYSTEM

# I. CONTENTS



G Control Hub



Power Adapter



Ethernet Cable

## 2. INSTALLATION

### 2.1. G Control Hub Installation

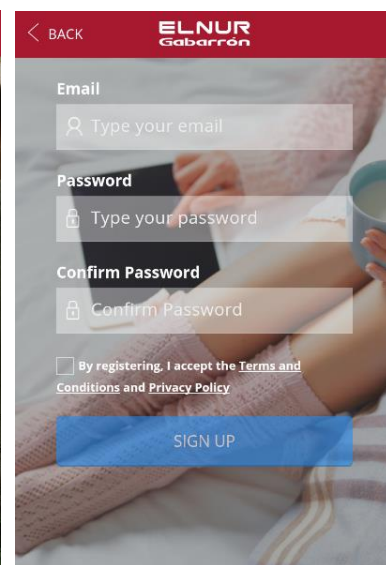
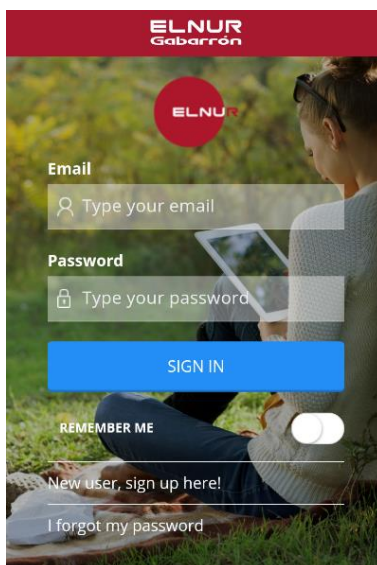
1. Connect the G Control Hub to internet using the supplied ethernet cable.
2. Connect G Control Hub to the electricity supply using the supplied power adapter.
3. Wait and check the status of LED lights to confirm the correct connexion between the G Control Hub and the router.

LEDS Status	Description
Green off, orange blinking every second.	G Control Hub in discovery mode for devices being associated.
Orange on, green blinking very fast	The router does not assign a valid IP to the G Control Hub.
Orange on, green blinking every 5 seconds	A valid IP is assigned to G Control Hub, but there is no communication with the server.
Orange on, green alternating every 5 seconds	A valid IP is assigned to G Control Hub and it communicates successfully with the server.

### 2.2. Register in app-web

Registering and creating a user account is required for remote control of your installation via internet. If you do not have a user account in Elnur Wifi Control, the first step is to register in the portal using the website <https://remotecontrol.elnur.es> or using the app Elnur Wifi Control available in App Store for IOS and Play Store for Android.

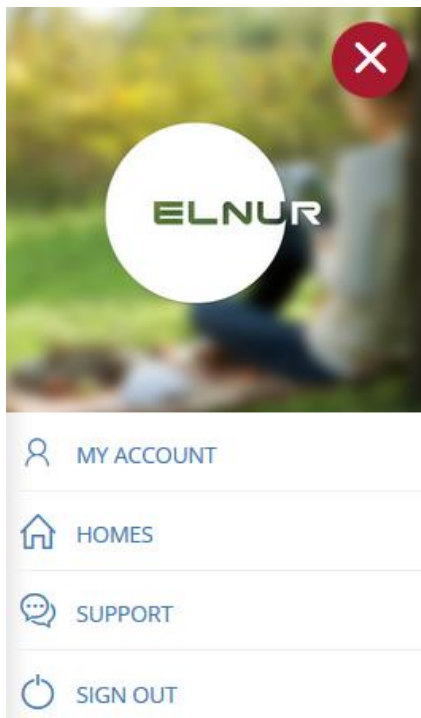
Enter a valid mail address that must be verified and a password. An email will be automatically sent to your inbox to verify the registered e-mail.



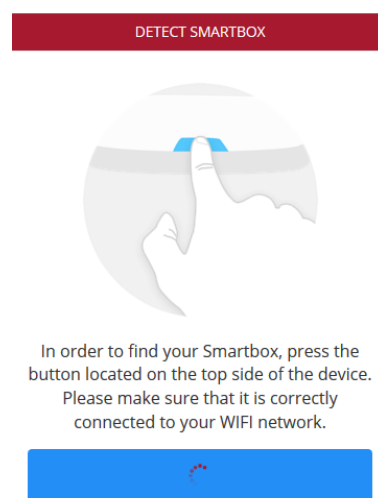
### 2.3. Linking with G Control Hub.

To control remotely your installation, you must link your G Control Hub with your registered user account. Several G Control Hub can be associated to a registered user account in order to control different installations if necessary.

To associate G Control Hub with your user account, you must enter on the “Homes” menu available on the right pop up menu of the website or the mobile app and follow the instructions of the installation wizard.



Enter the name and the time zone of your new home. If you are connected to internet using the same wireless network that G Control Hub is using, clicking the button “Detect Smartbox” on the app and following the detailed instructions (press the button located on the back side of the device), the user account will be associated with the G Control Hub device automatically.

A screenshot of a web form titled "ELNUR Gabarrón". At the top center is a red circular icon containing a white house silhouette. Below this icon are three input fields: "HOME INFO" with a right-pointing chevron, "HOME NAME" with the placeholder text "Type the name of your home", and "TIME ZONE" with a dropdown arrow and the text "Select...". At the bottom of the form is a large blue button with the text "DETECT SMARTBOX".

Automatic detection will be aborted after several seconds if you are not connected to the same network that the G Control Hub device or if the connection has failed. A new menu will appear where the user can introduce the Device ID Code, 18 position alphanumeric code, located on the label on the bottom of the device to link manually the register account with the G Control Hub.

The screenshot shows a web interface for Elnur Gabarrón. At the top is a red header with the logo. Below it is a white form area with a red house icon. The form contains the following fields: HOME INFO (with a right arrow), HOME NAME (ELNUR), TIME ZONE (Western European Time) London, Dublin, Lisbon, Canary Islands (with a dropdown arrow), and DEVICE ID CODE (ci89mc87dsanix9ax8). At the bottom of the form is a blue button labeled 'ADD NEW'.

Once the link between your user account and the G Control Hub is established, the different devices associated with the G Control Hub can be controlled remotely using Elnur Wifi Control app or the website <https://remotecontrol.elnur.es>.

2.4. Devices association

It is required to link by radiofrequency the different devices with the G Control Hub to control them remotely through the website and mobile app.

**Warning** G Control Hub is only compatible with devices equipped with G Control system.

**Discovery mode.**

The first step to associate the different devices with the G Control Hub is to activate the discovery mode of the hub. The discovery mode can be activated in two ways:

- Locally in the hub.  
To activate the discovery mode locally in the hub, press the button located on the back side of the device for 3 seconds, LED lights indicating discovery mode, orange light blinking every second, should be activated.
- Using app o app-web.

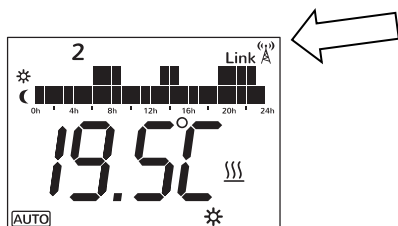
Having the user account linked to the hub, from the main menu in the app, press “Install” button and follow the instructions of the installation wizard, G Control Hub will activate the discovery mode.

Once activated discovery mode, you have 1 minute to add a new device, the account time is reset with each added device.

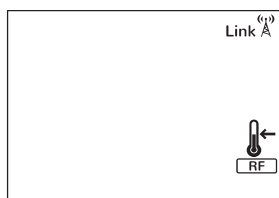
### Radiator association

With the hub in discovery mode, press Ok/Mode key of the unit for 3 seconds.

On top right on the screen, the symbol Link will appear confirming the correct connexion between the radiator and the G-Control Hub.



Another way to associate the unit and the G-Control Hub is press Config/Prog key and use the +/- keys to select **RF**, when the icon is blinking, press OK/Mode key. The unit will associate with the G-Control Hub, the symbol Link will be displayed.



### G Control PM association (Power meter)

The installation can be completed with a power meter installed in the electrical distribution box of your home, which will be used both to know the current energy power and historical energy consumption and to limit the consumed power coordinating the consumption of the different thermal radiators connected not to exceed the maximum power established by the user. (Energy manager).

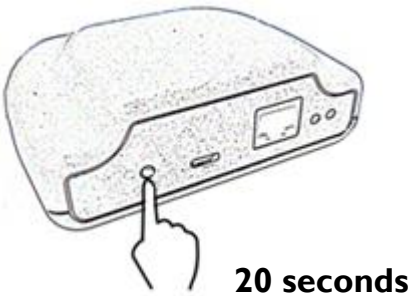
To link the G Control PM with the G Control Hub, once the discovery mode in the hub is activated, press with the help of a paperclip or a sharp object the interior button of the device. The LED light placed on the power meter indicates the status of the linking.

LED Status	Description
LED off	Not associated
LED blinking every 2 seconds	Correctly associated
LED blinking every half a second	Associated with the hub, bur currently lost the connection.

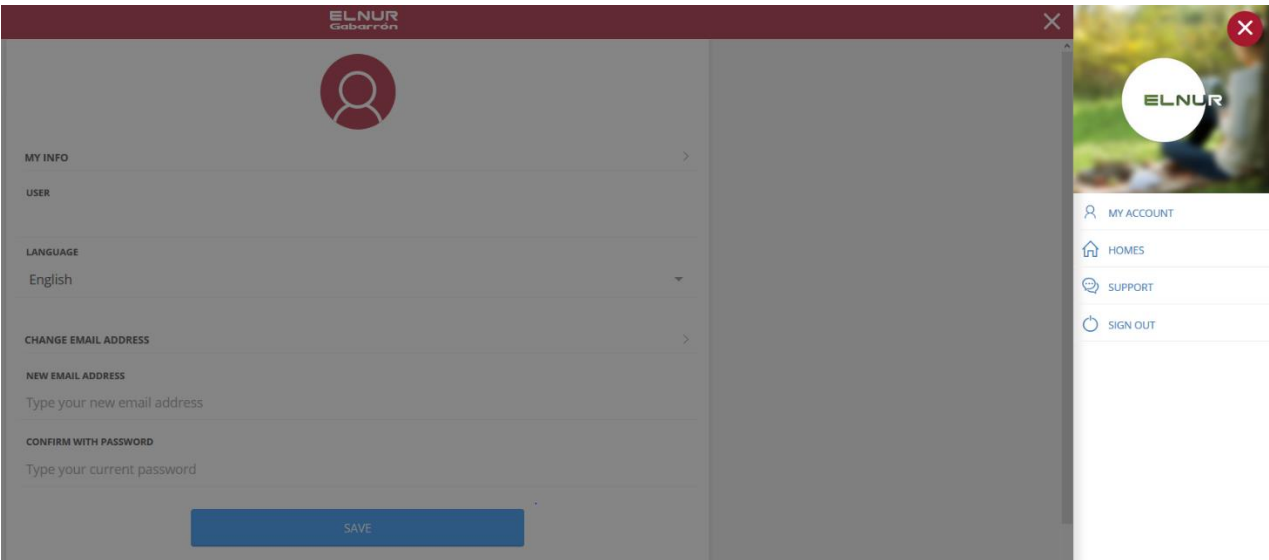
A maximum limit of total power installation can be set by the user using the web-app. The system disconnects the thermal radiators following the priority order previously set when the energy power is going to exceed the maximum power established by the user. If several thermal radiators have the same priority, the system will first disconnect the one that is closer to its set point temperature.

### 3. G CONTROL HUB RESET

The G Control hub reset will remove the existing RF network, removing the link with the different devices associated with the hub and the previous historical data of the hub. To reset the hub, press for 20 seconds the button located on the back side of the device.



**Warning** The G Control Hub reset does not remove the link between the device and the registered user account. To change the user account of the device, you must enter in the web-app and change the user account through the “My account” menu available on the right side pop up menu of the web-app.



### 4. TROUBLESHOOTING

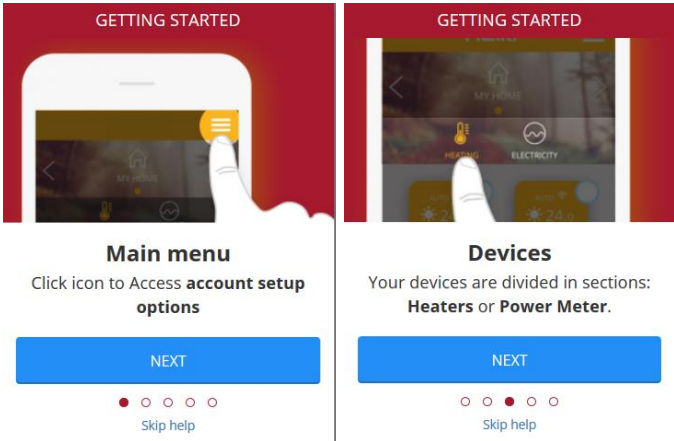
<b>G Control hub does not connect</b>	<p>Check the LEDS light of the hub that indicates the connection status.</p> <p>Check the power supply and the internet connection. An internet connection without a proxy and the ports 123UDP, 5000TCP and 5001 TCP opened are required. Router must have DHCP option activated.</p>
<b>Associated devices do not communicate with G Control Hub</b>	<p>Check the devices are correctly linked to the G Control Hub. Link icon must be displayed.</p> <p>If the distance is greater than 30 meters and 2-3 walls, link first the closest devices that will act as a signal relay increasing the radiofrequency signal.</p> <p>If link icon is blinking, your device is correctly associated with your hub, but it cannot communicate with the hub. Check the connection status of the hub or if any intermediate device that could be acting as a signal relay has been removed.</p>

### 5. MOBILES APP – WEB APP

Download free the app Elnur Wifi Control for IOS and Android available on Google play and App Store, or use the website <https://remotecontrol.elnur.es> from any device connected to internet, to control your G Control Hub and the devices associated.



Help is available at the bottom left of the web-app, which will guide you in handling the app and will help you to control your heating G Control system in an easy and intuitive way.





The symbol on the product or in its packaging indicates that this product may not be treated as household waste. Instead it shall be handed over to the applicable collection point for the recycling of electrical and electronic equipment. By ensuring this product is disposed of correctly, you will help prevent potential negative consequences for the environment and human health, which could otherwise be caused by inappropriate waste handling of this product. For more detailed information about recycling of this product, please contact your local city office, your household waste disposal service or the shop where you purchased the product. These instructions are only valid in the EU member states.



ELNUR S.A.  
Travesía de Villa Esther, 11  
28110 Algete - Madrid  
Telephone +34 91 628 1440

[www.elnur.es](http://www.elnur.es)  
[www.elnur-global.com](http://www.elnur-global.com)  
[www.elnur.co.uk](http://www.elnur.co.uk)



*As a part of the policy of continuous product improvement, Elnur s.a. reserves the right to alter specifications without notice.*